



welkom  
bij de  
ontbijt sessie  
cultuur  
eindhoven

# cultuur eindhoven

**Ontbijtsessie**

**The Cultural and Creative  
Cities Monitor**

**19 November 2019**

# EU-Monitor CCCM

## Wat is het?

- Onderzoek van JRC van de EU
- Collectie van kwalitatieve en kwantitatieve data
- Framework van indicatoren voor benchmark van de steden
- Tool om inzicht te krijgen binnen de krachten en kansen op het gebied van Cultuur en Creativiteit

# EU-Monitor CCCM

## Wat houdt CCCM in?

- Vergelijking van 190 steden
- Onderverdeling per aantal inwoners, inkomen en werkgelegenheid

## Waarom relevant?

- Hoe verhoudt Eindhoven zich tot andere steden?
- Waar liggen kansen binnen Eindhoven?

# Het Framework



## CULTURAL VIBRANCY



D1.1 Cultural Venues & Facilities



D1.2 Cultural Participation & Attractiveness



## CREATIVE ECONOMY



D2.1 Creative & Knowledge-based Jobs



D2.2 Intellectual Property & Innovation



D2.3 New Jobs in Creative Sectors



## ENABLING ENVIRONMENT



D3.1 Human Capital & Education



D3.2 Openness, Tolerance & Trust

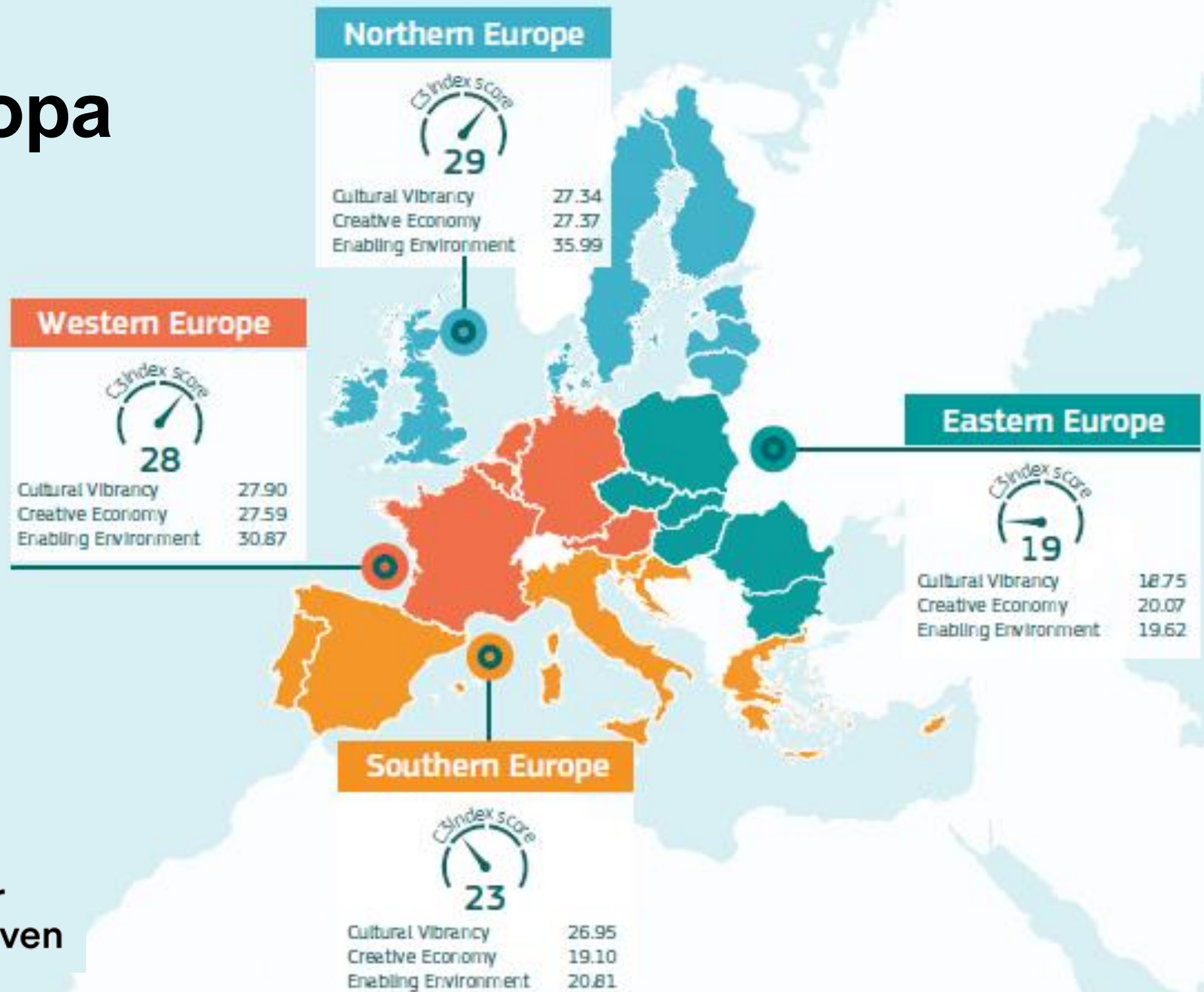


D3.3 Local & International Connections

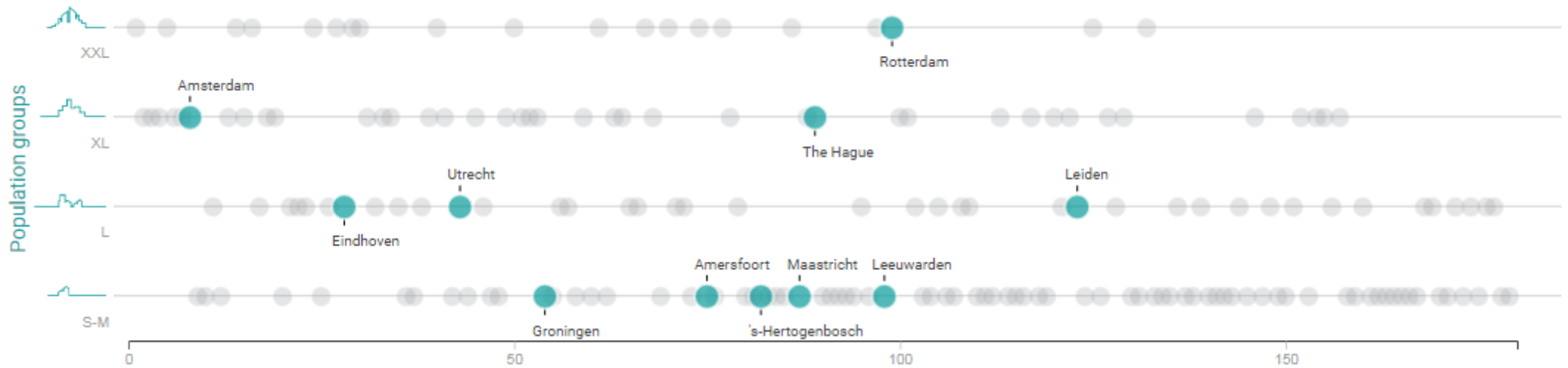


D3.4 Quality of Governance


# Europa



# Nederland



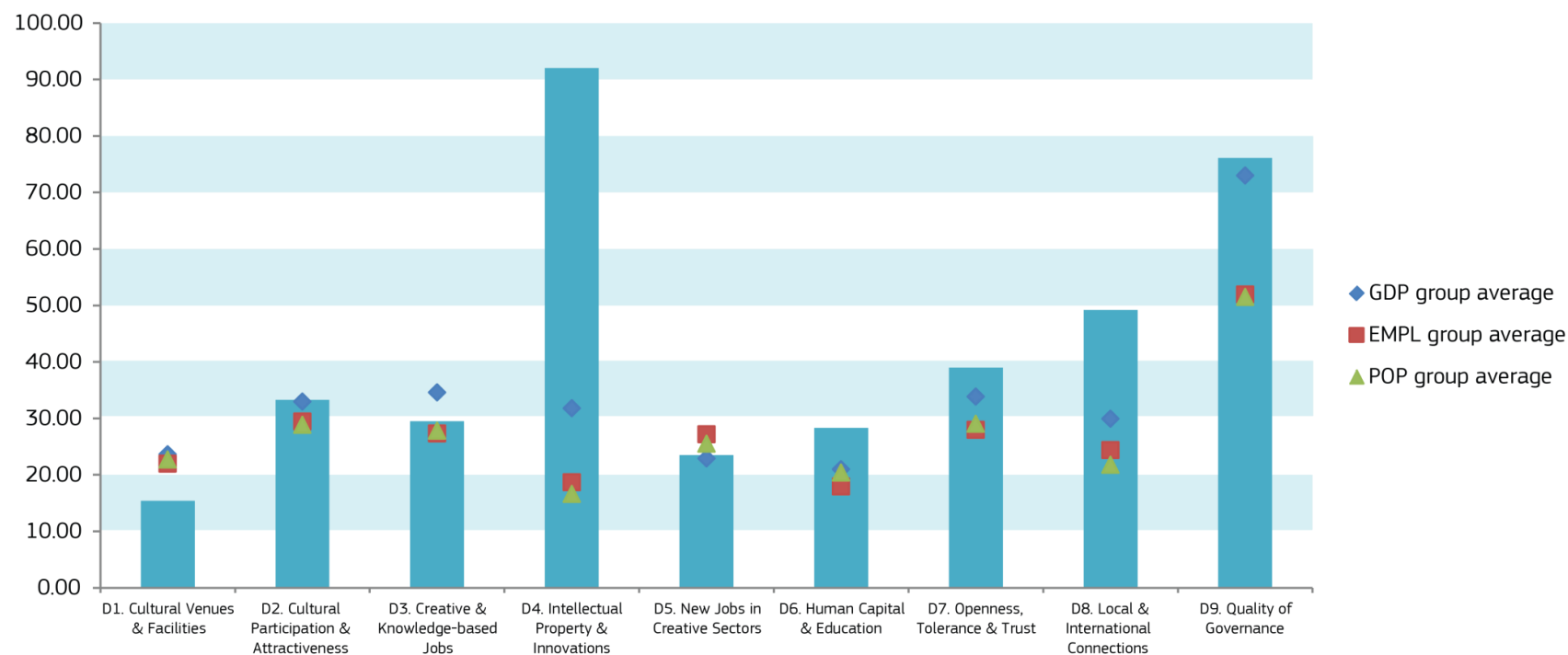
# Eindhoven

| Population group |  | 250 000-500 000 inhabitants (40 cities) |                  |                      |
|------------------|---|---|------------------|----------------------|
| #                | City [Confidence intervals]   | Cultural Vibrancy                       | Creative Economy | Enabling Environment |
| 1                | Florence-Italy [1, 9]   | 1                                       | 17               | 34                   |
| 2                | Karlsruhe-Germany [1, 4]  | 14                                      | 4                | 3                    |
| 3                | Venice-Italy [2, 18]  | 2                                       | 26               | 32                   |
| 4                | Bristol-United Kingdom [1, 5]   | 11                                      | 6                | 5                    |
| 5                | Tallinn-Estonia [1, 6]  | 6                                       | 3                | 26                   |
| 6                | Brighton-United Kingdom [4, 8]  | 10                                      | 7                | 2                    |
| 7                | Eindhoven-Netherlands [3, 10]   | 17                                      | 5                | 7                    |
| 8                | Graz-Austria [5, 10]  | 4                                       | 12               | 9                    |
| 9                | Utrecht-Netherlands [4, 12]   | 15                                      | 9                | 4                    |

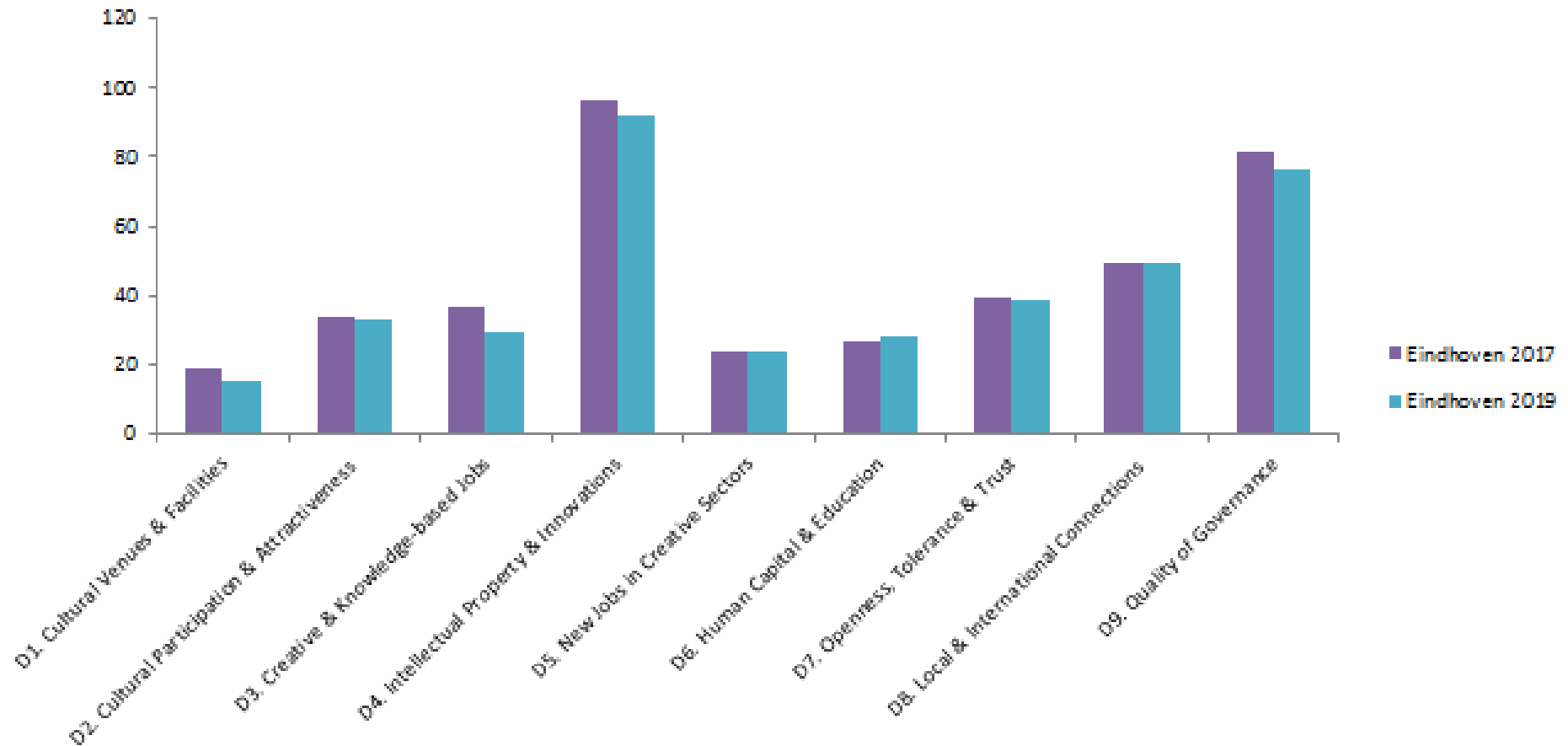


# Eindhoven

- 1<sup>e</sup> op het gebied van intellectuele eigendommen en innovaties



# Eindhoven 2017-2019



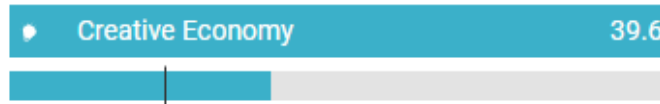
# Cultural Gems

## Wat is het?

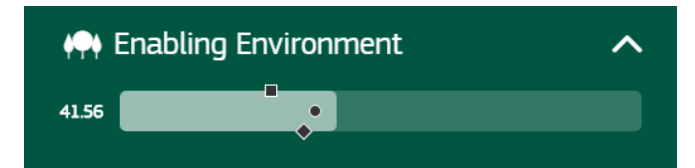
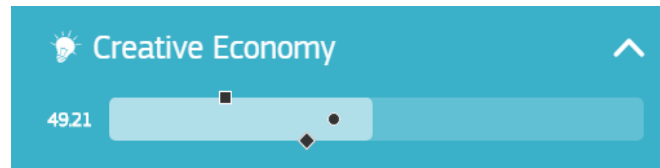
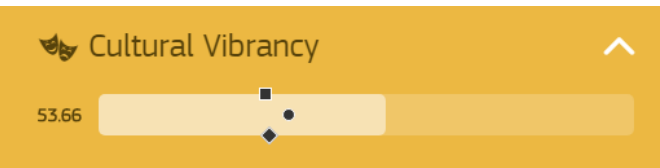
- Dynamische spin-off van City Monitor
- Optie om culturele locaties toe te voegen

## Verskil in scores

### Cultural and Creative Cities Monitor



### Cultural Gems



## **The Cultural and Creative Cities monitor:**

<https://composite-indicators.jrc.ec.europa.eu/cultural-creative-cities-monitor/>

## **Cultural Gems:**

<https://culturalgems.jrc.ec.europa.eu/>

Zijn er nog  
vragen/ideeën?



**cultuur  
eindhoven**

**Dank voor jullie komst**